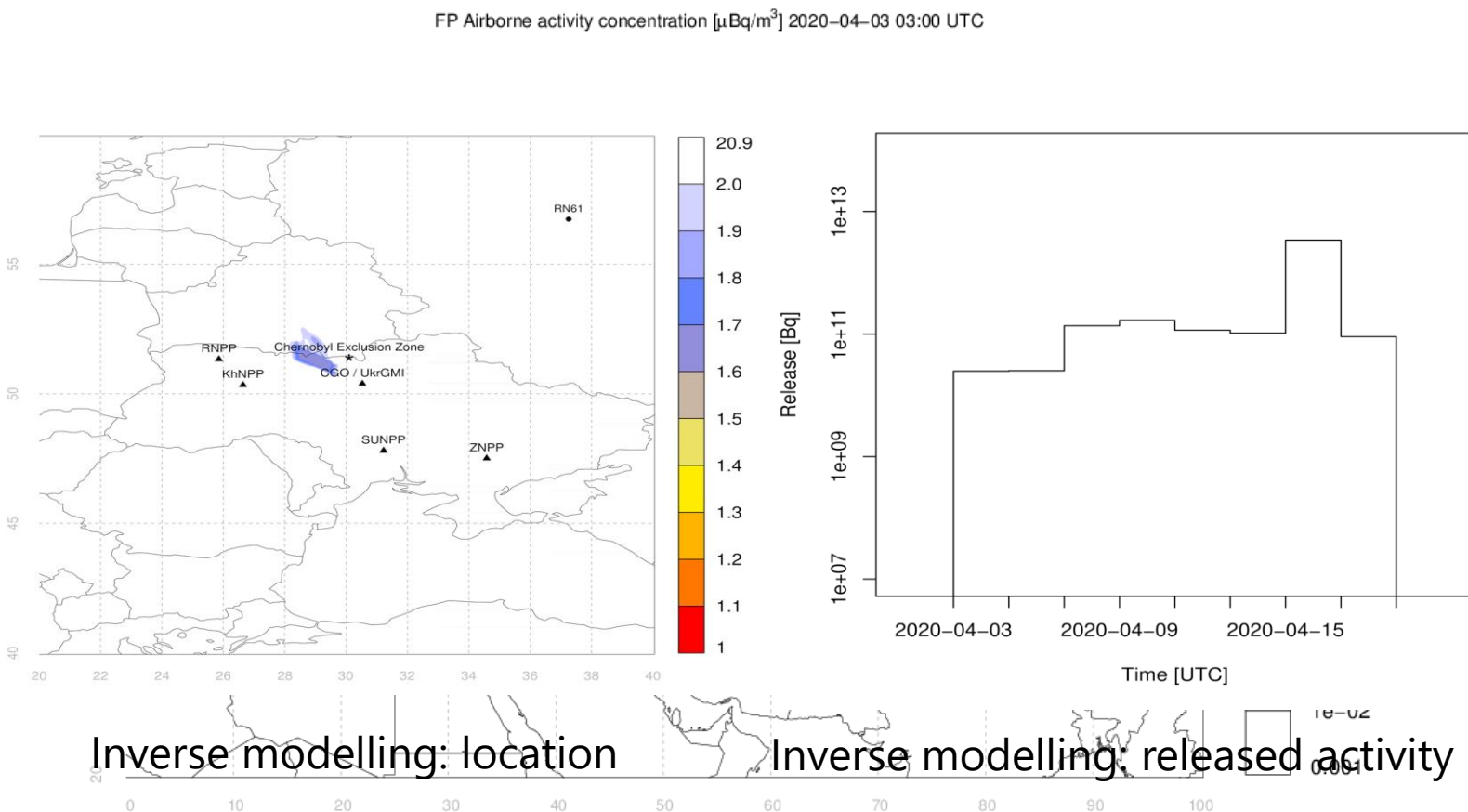


Chernobyl wildfires: a scientific and societal challenge

C. Gueibe, P. De Meutter, L. Verheyen, M. Bruggeman & J. Camps (SCK CEN)
A. Delcloo (RMI)

- GFAS location fires
- ATM (Flexpart) with ECMWF data
- Forward with hypothetical source term (1 TBq)
- Inverse modelling based on Ukrainian data (Ro5)

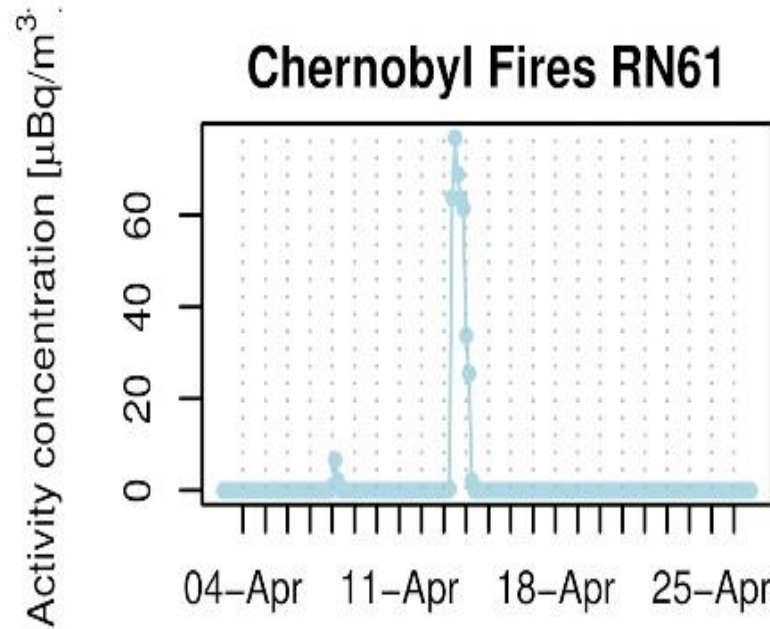


Observations in the International Monitoring System

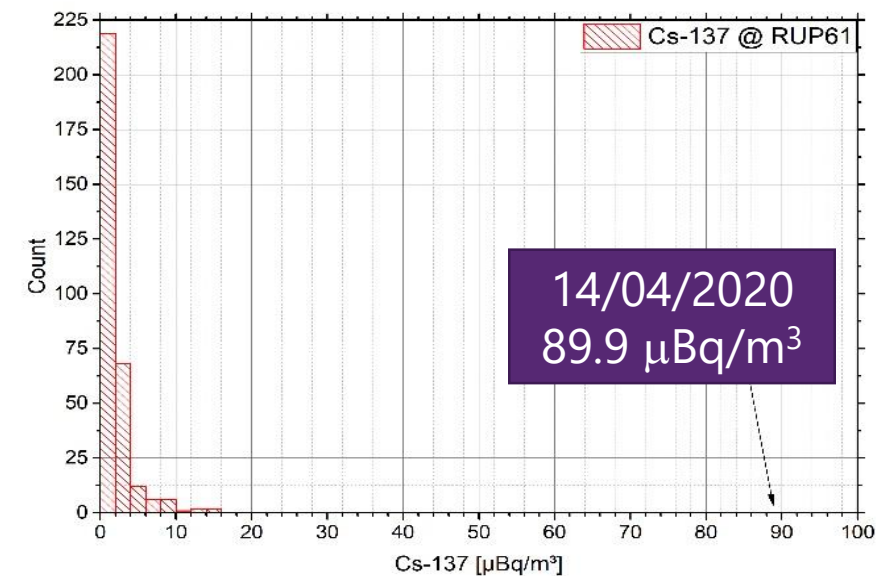
Set-up in context of the verification of the nuclear test-ban treaty

71 certified particulate stations – 24 h sampling time – MDC 1-5 $\mu\text{Bq}/\text{m}^3$ Cs-137

- 25 **relevant** Cs-137 observations
- Chernobyl can be origin based on Source-Receptor-Sensitivity
- Result > MDC



ATM prediction



Frequency station history
Cs-137 observations (last 7 years)

Observations in Belgium?

SnowWhite air-sampler at SCK CEN

